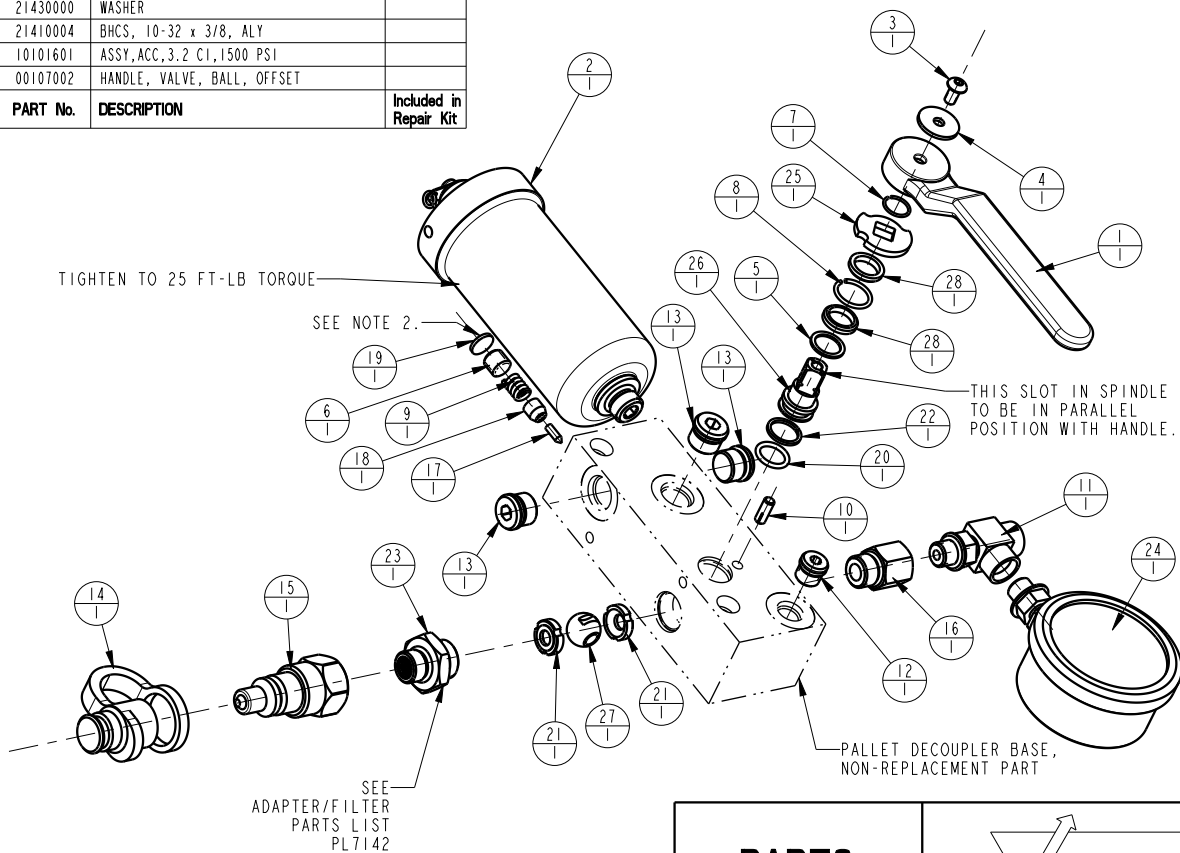


NOTE:
 1. APPLY LUBRICANT TO ALL SEALS PRIOR TO INSTALLATION.
 DO NOT USE SILICON TYPE LUBRICANTS.
 2. SET THE OVER-PRESSURE RELIEF VALVE AT 6,000 PSIG AND THEN INSTALL THE EXPANSION PLUG.

N/A	N/A	62560000	KIT, REPAIR, PALLET DECOUPLER	
28	2	87010193	SPACER, SPINDLE, STEEL, VALVE, BALL	*
27	1	87010192	BALL, CONTROL, DIRECTIONAL	*
26	1	87010191	SPINDLE, CONTROL, VALVE, BALL	*
25	1	87010190	WASHER, LIMIT, VALVE, BALL	
24	1	72212162	GAUGE, PRESS, HYDR, 10000 PSI	
23	1	70040772	ASSY, ADAPTER/FILTER, PD, 25 MICRON	
22	1	39010042	BU RING, (-014)	*
21	2	39010040	SEAL, VALVE, BALL	*
20	1	39000037	O-RING, (-906)	*
19	1	35349089	PLUG, EXPANSION, 7/16	*
18	1	35349057	RELEASE GUIDE	
17	1	35349056	ROD, RELEASE	*
16	1	30801264	REDUCER, MALE SAE 6 - FEM SAE 4	
15	1	30772766	COUPLING, OD, SAE 6, MALE	
14	1	30719706	COVER, DUST, OD, SAE 6	
13	3	30601166	PLUG, SOCH, SAE 6	
12	1	30601144	PLUG, SOCH, SAE 4	
11	1	30231244	TEE, RUN, SAE 4 FEM - SAE 4 MALE	
10	1	23521018	PIN, GROOVE, TYPE H, 3/16, 1/2 LONG	
9	1	23350057	SPRING, COMPRESSION	
8	1	23012008	RETAINING RING, ROUND, INTL	*
7	1	23002011	RETAINING RING, ROUND, EXT	*
6	1	21440015	SHSS, OVAL POINT	
5	1	21430017	WASHER	*
4	1	21430000	WASHER	
3	1	21410004	BHCS, 10-32 x 3/8, ALY	
2	1	10101601	ASSY, ACC, 3.2 CI, 1500 PSI	
1	1	00107002	HANDLE, VALVE, BALL, OFFSET	
No.	QTY	PART No.	DESCRIPTION	Included in Repair Kit



PARTS LIST



VEKTEK, INC.
 1334 E. SIXTH AVE. P.O. BOX 625
 EMPORIA, KS. 66801 U.S.A.

N	5822	RELEASE	JDW	10/05/25
REV	IN ACCORDANCE WITH ECN	EFFECTIVE DATE	REVISED BY	DATE
DRW BY: VANDALSEM	DRAWING STATUS: Released			
DATE: 11-19-90	PRODUCTION APPROVED FOR RELEASED STATUS ONLY			

ASSEMBLIES AFFECTED
 56-0002-01

PARTS LIST, ASSY, PD, HORZ, 1500 PSI

SIZE
 A PL5602

REV
 N

FORM FEG035_PL.A.SIZE, REV. B

SHEET 1 OF 1